



UNDER THE K

New York City's first "el-space" park



NORTH
BROOKLYN
PARKS
ALLIANCE

NORTH BROOKLYN PARKS ALLIANCE

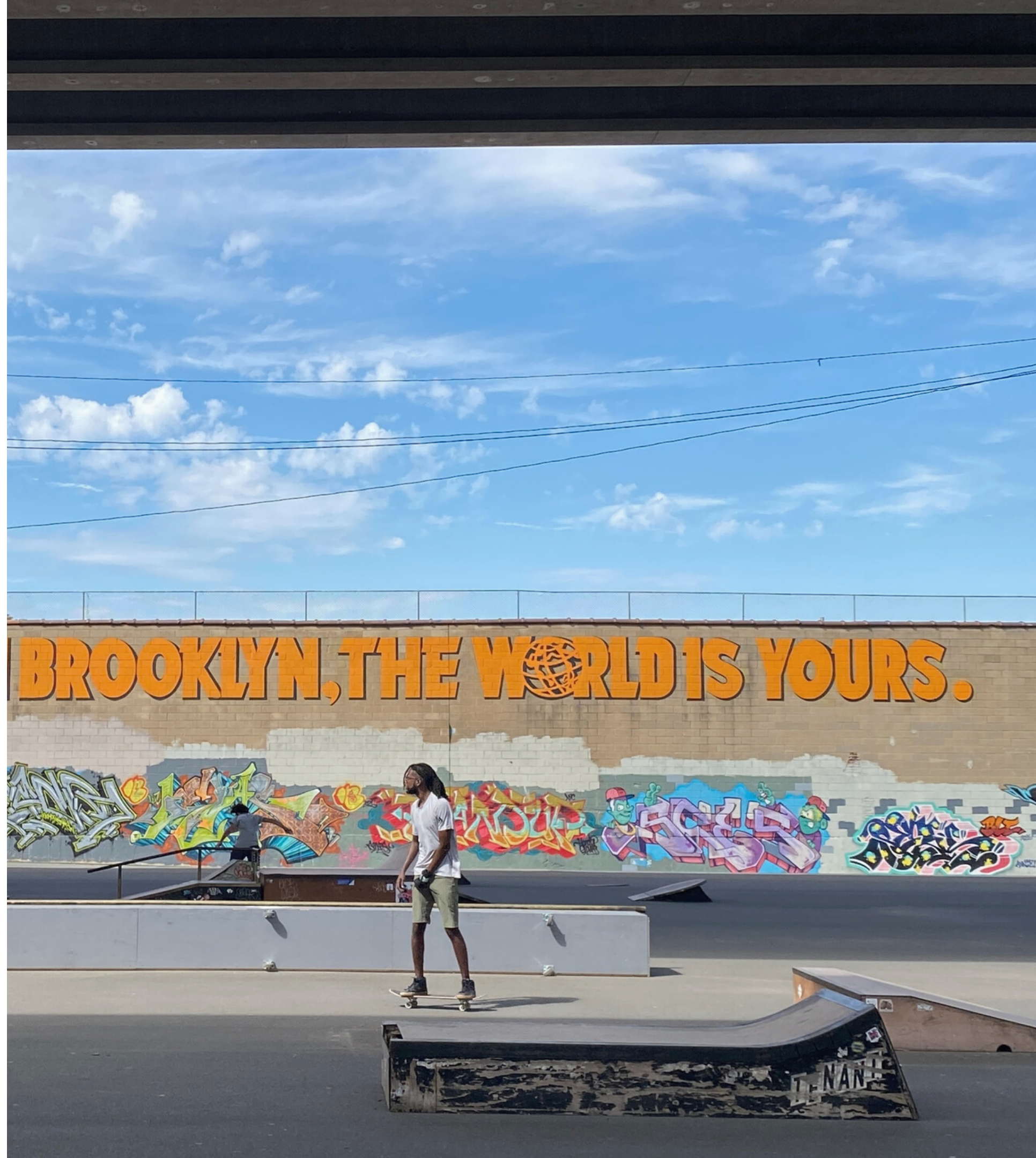
[_ ABOUT THE PARK](#)

[_ ABOUT THE NEIGHBORHOOD](#)

[_ ABOUT US](#)

[_ ABOUT YOUR EVENT](#)





A PARK GROWS IN BROOKLYN

Located directly under the Kosciuszko Bridge and called "Under the K Bridge Park," the new park converts a formerly abandoned site into a vibrant seven-acre open space that invites the public to a little-known waterfront of Newtown Creek.

The space, designed by Toronto-based landscape architecture firm PUBLIC WORK, features expansive multi-purpose sections for recreation, culture, and woodland areas where more than 20,000 trees and native plant species now grow.

Under the soaring Kosciuszko Bridge columns, our "El-space" grows from 40 feet to as much as 100 feet in height. Distinguishing itself with massive industrial "rooms" connected by a continuous beam of light that runs the park's length, creating what we call a "solar slice."



WHAT'S AN EL-SPACE?

"EL-SPACES" ARE SPACES
BENEATH AND ADJACENT TO
ELEVATED TRANSPORTATION
SUCH AS BRIDGES, HIGHWAYS,
OR TRAINS.

WE CALL
THIS THE
"SOLAR
SLICE"



Cities all over the world are looking at public space. How can it be better used, be made more equitable, and become more green, smart, and connected?

One such space that often excites city planners and architects is the "El-space." "El-spaces" are spaces beneath and adjacent to elevated transportation such as bridges, highways, or trains.

El-spaces are incredibly special places. They are being used to reclaim and transform public space with sustainability and versatility in mind. If done right, they act as meaningful connectors between neighborhoods and neighbors.





Born out of a community-driven design process that lasted two years, Under the K creates a collaborative space, unlike any other traditional park.

Under the K Bridge Park is State DOT property. Funded in part by the Greenpoint Community Environmental Fund (GCEFF). Administered, maintained, and programed by 503-C nonprofit, the North Brooklyn Parks Alliance.

WAIT! THE PARK IS UNDER A BRIDGE?

FOR THE MOST PART. YUP, THE
PARK IS UNDER THE BRIDGE.
HOWEVER, THERE ARE SEVERAL
SECTIONS THAT MAKE UP THE
PARK



7 ACRE PARK

**6 DISTINCT
SPACES**

**SKYLINE &
WATERFRONT
VIEWS**

BRIDGE

Kosciuszko Bridge connects Brooklyn to Queens with a modern cable-stayed bridge that features a generous 20 ft wide, 1.8-mile long bike & pedestrian pathway surrounded by city views



PLAZA

Kosciuszko Bridge Plaza convenes at the base of the bridge on the Brooklyn side, providing several landscaped and restful areas for users coming off the bridge's pathways, the area's local streets, or before entering the park



ARM

"The Arm" is a linear promenade that ushers pedestrians and cyclists into the park space below the bridge. It meanders down through the IBZ zone, providing a respite from the surrounding area.





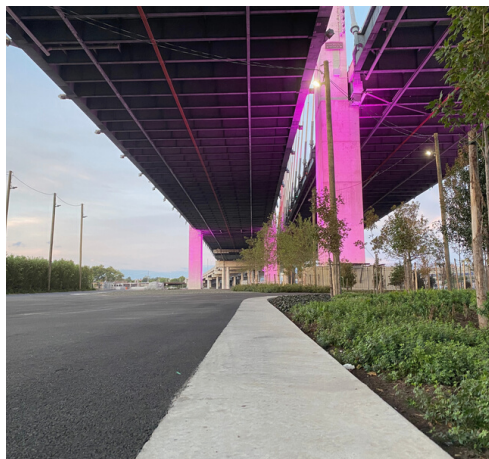
FLEX 1 (THE BOWL)

A grand entrance to an el-space, if there ever was one. Flex 1 is a multifunctional zone geared to rotating programming, community activities, and play. And is completely adored by the skater community



FLEX 2 (THE SUNSET FLEX)

An expansive and airy space with sunset & city views. This massive space can host large-scale events, performances, and recreation, unlike anything available in North Brooklyn.



FLEX 3 (CREEKSIDE)

An intimate and reflective space with a natural amphitheater, Creekside celebrates a prime position along the water's edge with public outlooks and a restorative landscape of native creekside ecologies.

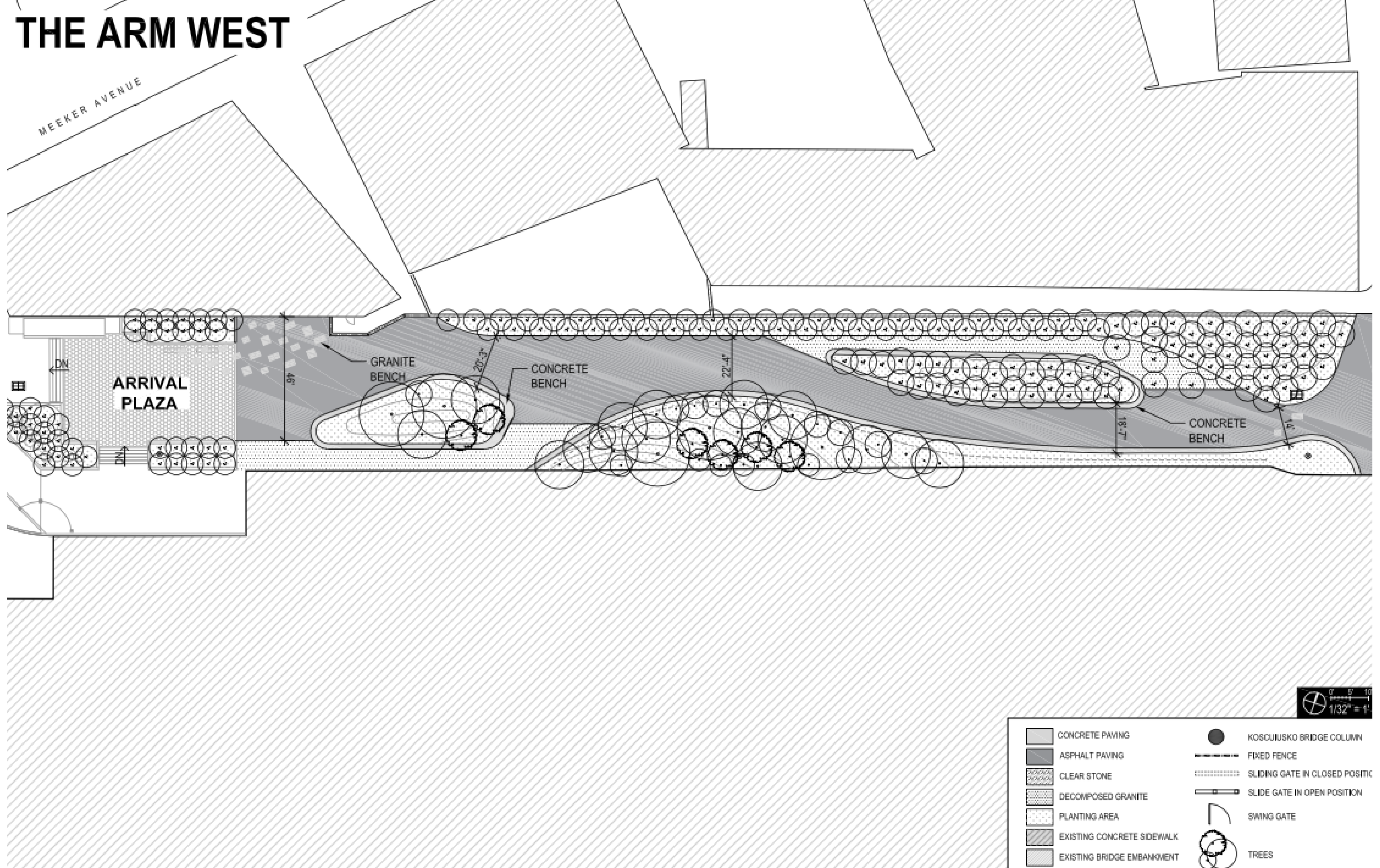
**10-15K
PERSON
CAPCITY**

**DAILY
WEEKLY
MONTHLY
RENTALS**

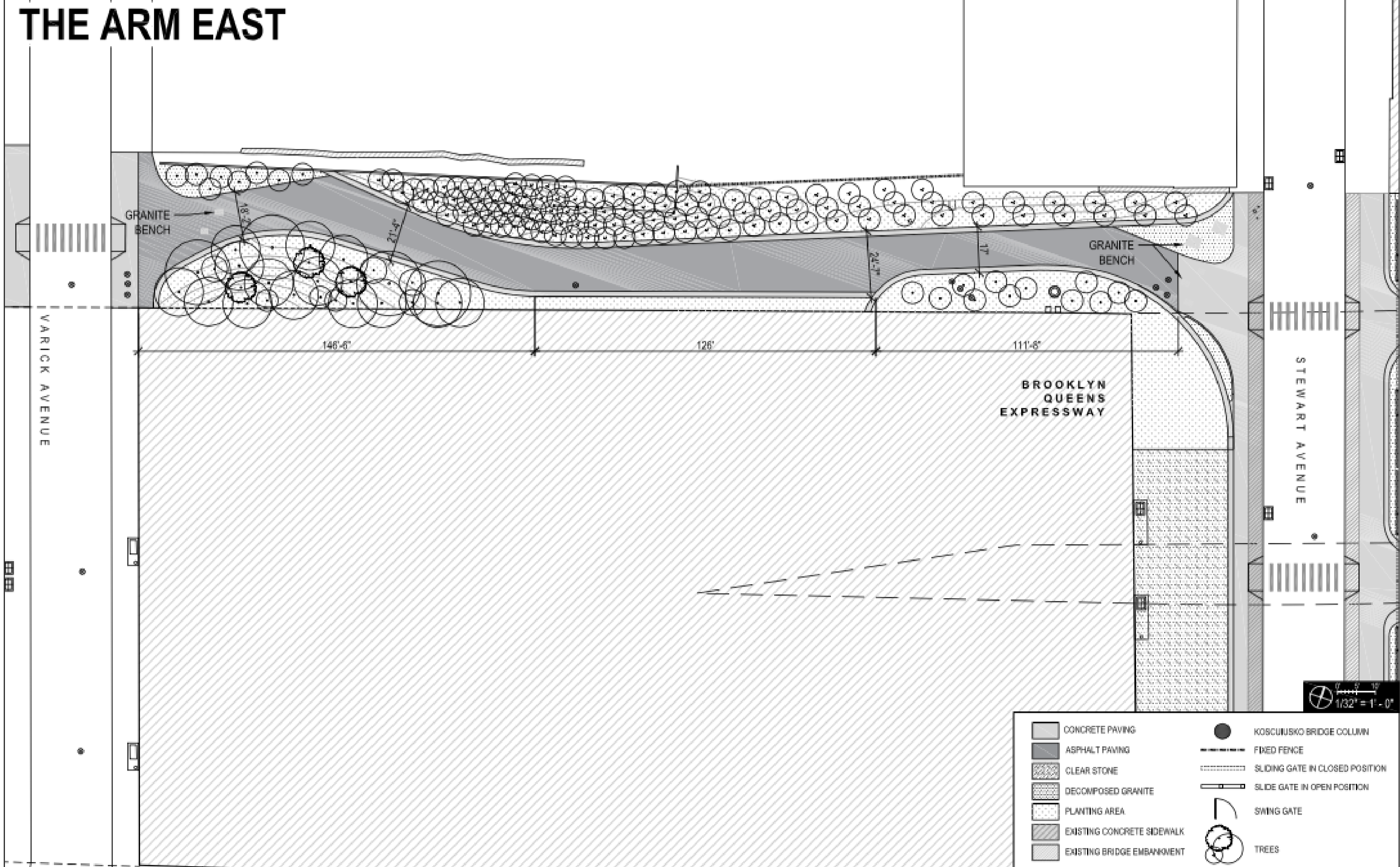


THE ARM

THE ARM WEST



THE ARM EAST

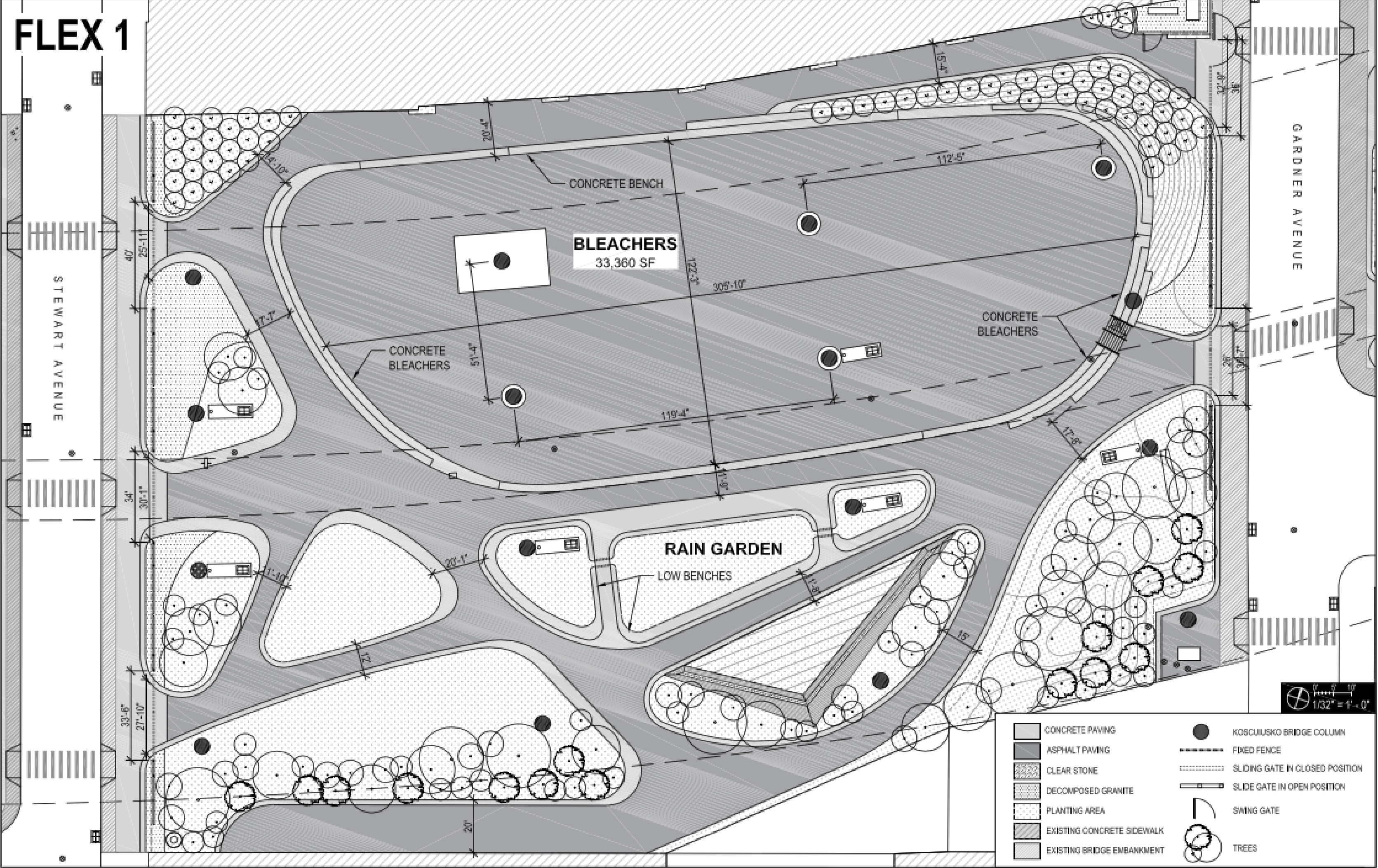




FLEX 1

SQ FT: 106,818 / 2.4 ACRES
CAPACITY: 8,000

FLEX 1



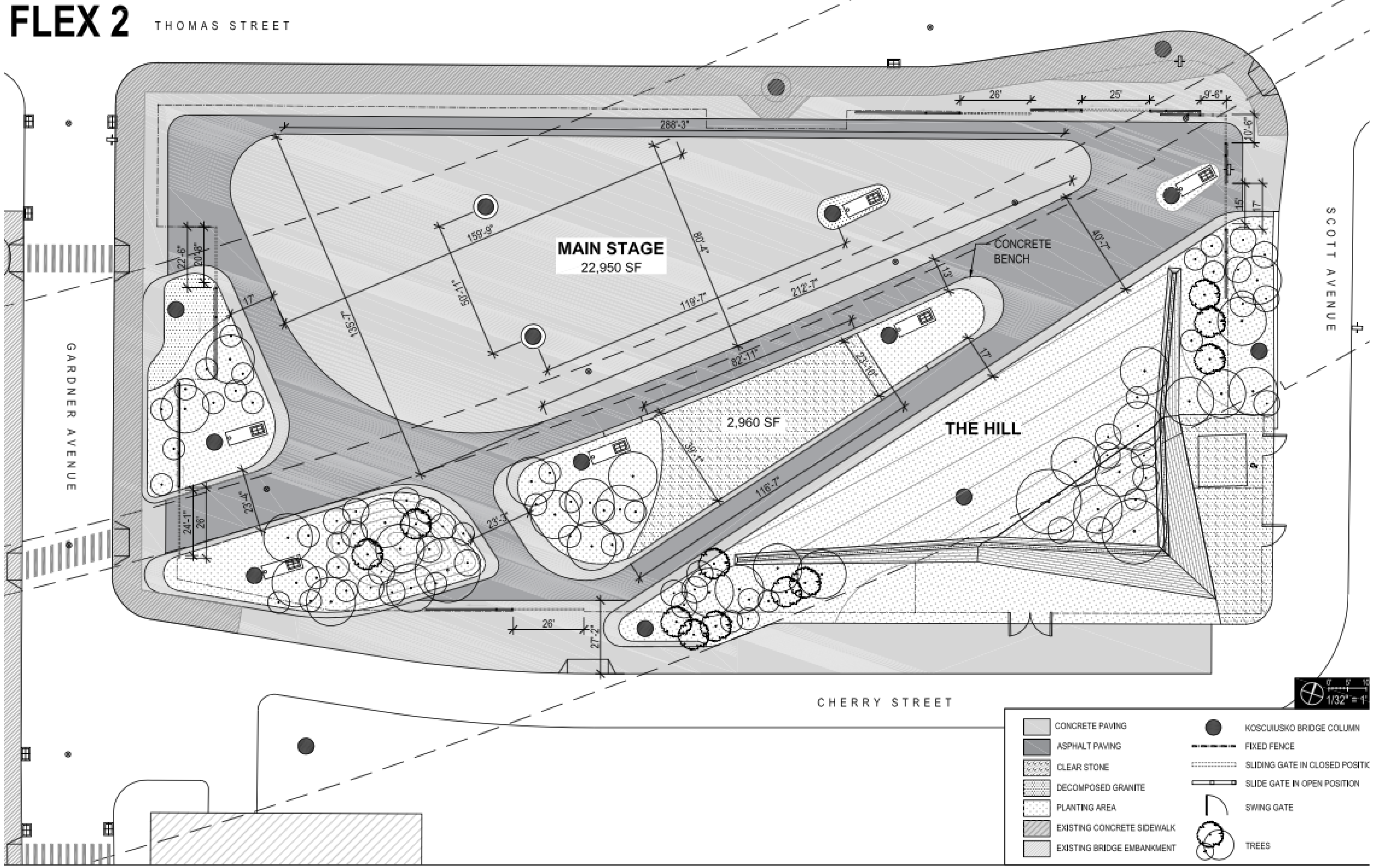


FLEX 2

SQ FT: 71,317 / 1.64 ACRES
CAPACITY: 4,500

FLEX 2

THOMAS STREET





CREEKSIDE

SQ FT: 49,137 / 1.1 ACRES
CAPACITY: 2,500

CREEKSIDE

NEWTOWN
CREEK


AMPHITHEATER
4,030 SF

2,880 SF
52'-1"

GRANITE
BENCH

SCOTT AVENUE

0 5 10
1/32" = 1'-0"

- | | | | |
|---|----------------------------|---|---------------------------------|
|  | CONCRETE PAVING |  | KOSCIUSKO BRIDGE COLUMN |
|  | ASPHALT PAVING |  | FIXED FENCE |
|  | CLEAR STONE |  | SLIDING GATE IN CLOSED POSITION |
|  | DECOMPOSED GRANITE |  | SLIDE GATE IN OPEN POSITION |
|  | PLANTING AREA |  | SWING GATE |
|  | EXISTING CONCRETE SIDEWALK |  | TREES |
|  | EXISTING BRIDGE EMBANKMENT | | |



THE NORTHERN MOST POINT

North Brooklyn is a perfect mix of "old school" and "new school," balancing a densely populated residential area with its long history as an industrial hub.

The area is made up of two neighborhoods; Greenpoint & Williamsburg. Together they form Brooklyn Community District 1 and their zip codes are 11222, 11211, 11249

The neighborhood was historically thought of as isolated. However, it is surrounded by transport. Bound by the three bridges and four exits off the BQE, the district has miles of bike lanes, the second-longest Open Street, three ferry stops, four subway lines & seven buses.

As of 2019, North Brooklyn had a population of 151,308 people whose average age is 31. The median household income of just under a hundred thousand a year.





Bought and stolen from the native Lenape & Canarsie tribes, North Brooklyn was first colonized by the Dutch in the 1600s and settled as farmland by a handful of families, most of whose names still dot the neighborhood's streets. As the country industrialized, so did North Brooklyn, and from the 1800s through the second world war, the area thrived as a center of commerce.

However, like many American cities, the area fell into an economic and environmental decline in the late 1970s. This spurred the arduous and confrontational task of rezoning which began in the late 1980s and continues today.

ABOUT US



NORTH BROOKLYN PARKS ALLIANCE

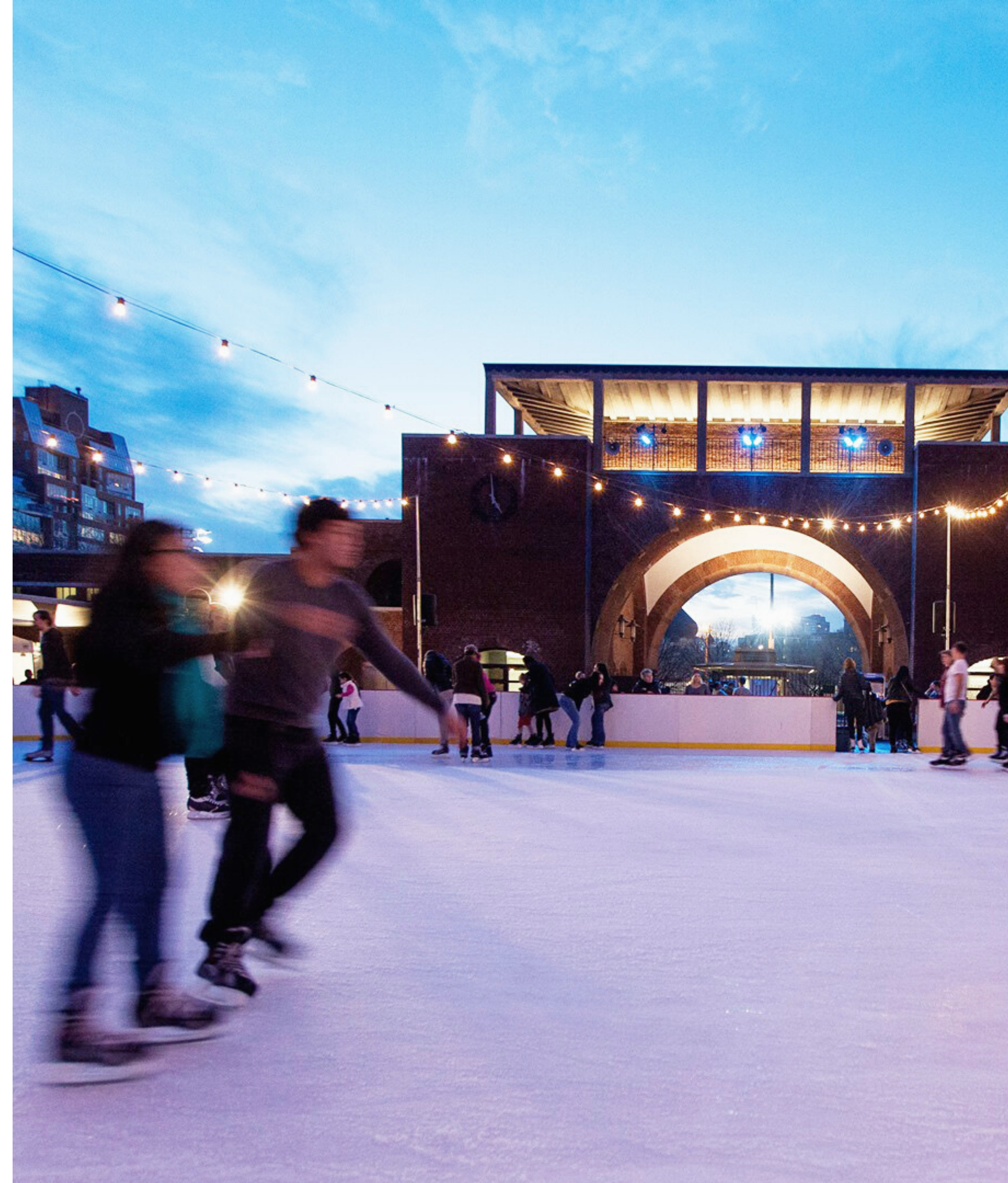
Our mission is to create an equitable, accessible, and vibrant parks & open space system in North Brooklyn.



Formed in 2003, North Brooklyn Parks Alliance was born out of the environmental justice movements of the 1980s and 90s. We partner with city and state agencies, as well as community and civic organizations to focus on the creation and maintenance of parks and open spaces while also acting as a grassroots community-building and advocacy organization.



We do fun things, like throw concerts, build ice skating rinks, sponsor basketball tournaments, and fund pumpkin patches. But we also do important things, like help solve for food desserts and encourage community gardens. We create space in unexpected places and advocate for it where it is long overdue. We fiscally sponsor environmental remediation projects and supply volunteers with quality tools and resources all while we fight for adequate funding and an equitable system for all New Yorkers.





ABOUT YOUR EVENT



HOW DO I BOOK UNDER THE K?

Under the K Bridge Park is New York City's newest event location. Juristically it is unique, but well worth the extra attention to detail

From intimate events to large-scale multi-day productions, Under the K Bridge Park has infinite possibilities. With proper planning, the park allows vending, liquor sales, and amplified sound.

Rental fees are determined on a case-by-case basis; we suggest a minimum of 90 days of advance planning but will consider events on a tighter timeline.

Following city and state permitting approval, staging, tents, canopies, inflatable structures, banners, signs, projections, and/or balloons are permissible.

- At this time, a TPA (Temporary Place of Assembly Certificate) is **NOT** required.
- At no time, under any circumstance, can a projection or object enter the bridge space above
- At no time, under any circumstance, can any item pierce the bridge's columns.





Amplified Sound is permissible with appropriate city permits.

- Preferred hours are noon-midnight
- Extended hours may be granted on a case-by-case basis and at an additional fee

At this time, we do NOT offer power.

- Be prepared to bring the appropriately sized generator(s) for your event from our preferred vendor
- Generator placement must be approved in the site plan.

Vending is permissible in the park.

- Merchandise sales or fundraising events are permissible
- a copy of your Incorporation papers and Sales Tax information will be required.

Alcohol, Beer & Wine sales are permissible

- an approved SLA permit & Security plan is required
- Door/Bar closes one hour before event time

Food sales are permissible with an approved Catering Permit & current Health Department catering license

Clients are responsible for bringing in their own professional team of insured vendors; catering, bar, design, florist/designer, lighting/sound, staging, entertainment, rental companies, etc.

Rental rates typically include load in/set up, event, breakdown/load out. If an additional day or days are needed to complete setup and breakdown additional fees shall be incurred.

- The park can be rented in its entirety or by parcel.
- Rentals are possible on major holidays or holiday weekends.
- It is possible to "activate" the Creek; this will require working closely with the Coast Guard for permits and safety protocol.

Your event must be staffed, including but not limited to the grounds crew, site ambassadors, greeters, traffic control, and security staff.

- There are no bathrooms on site; the event must provide facilities
- Trash and recyclables will not be allowed to gather. A grounds plan will be required.
- Vehicles are permitted on parkland ONLY with special permission and ONLY in designated locations. A production plan and run of show will be required
- Street parking is limited; a traffic plan will be required.
- Street closures are possible with Street Activity Permit Office (SAPO)

The space has to be thoroughly cleaned and returned to its original state.

- When planning, consider all spaces that will be used by event's attendees



THINGS TO CONSIDER

VENUE VENDORS

- Security, Traffic, EMS teams
- Generators
- Heavy Equipment
- Carting
- Cup Zero, Barbacks, Event Cleaning
- Bathrooms
- WIFI

PRODUCER'S CHOICE

- Insurance (COI)
- SLA Filing
- Food Vendors/Trucks
- Street Closings (SAPO)
- Amplified sound
- Ticket sales
- Event Staffing
- Onsite vending
- Stage/Sound Companies
- Ground/Uplighting
- Barricades/Wayfinding
- Decor, Tents, Furniture

-
- 94th Precinct
 - Community Board 1 (CB 1)
Williamsburg/Greenpoint
 - Link to **Map** of NBK open and green spaces in CB1
<https://bit.ly/NBKParkMap>
-

- The park was designed by Toronto-based landscape architecture firm, [PUBLIC WORK](#)
- You can learn more about el-spaces here:
<https://vimeo.com/177570193>
- Link to our Website
<https://nbkparks.org>
<https://nbkparks.org/under-the-k/>
- Link to sign up to our [Mailing list](#)
- Link to our Instagram [@NBKparks](#) [@UndertheK](#)
- Link to our Twitter [@NBKParks](#)
- Link to our Facebook [@NBKParks](#)
- Link to our Youtube [@NBKParks](#)

HELPFUL NBK PARKS INFO & LINKS

#underthek, #nbkparks, #northbrooklyn parksalliance,
#supportthethingsyoulove, #elspace

@nbkparks, @underthek, @gcef, @nysdot



What do we do now?

[VIEW EVENT REEL](#)

SUBMIT YOUR EVENT
[BIT.LY/BOOKUTK](https://bit.ly/bookutk)

CONTACT:
LYNN DEL SOL
(917) 826-5550
BOOK@NBKPARKS.ORG

